

ATTACHMENT A

National Cooperative Highway Research Program
Transportation Research Board
National Research Council

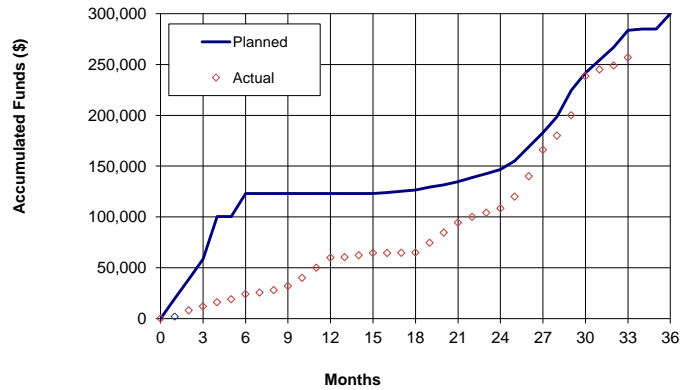


NCHRP Project No. 22-28
Criteria for Restoration of Longitudinal Barriers – Phase II
Research Agency: RoadSafe LLC
Principal Investigator: Malcolm H. Ray

Task	Title	2012												2013												2014												Estimated Task Complete	
		J	F	M	A	M	J	J	A	S	O	N	D	J	F	M	A	M	J	J	A	S	O	N	D	J	F	M	A	M	J	J	A	S	O	N	D		
1	Phase I Review	1	2	3	4	5	6	7	8	9	10	11	12	13	14	15	16	17	18	19	20	21	22	23	24	25	26	27	28	29	30	31	32	33	34	35	36	100	
2	Prioritize Damage Modes	25	50	75	100																																		100
3	Interim Report					50	50	100																															100
4	Execute Work Plan																																					98	
5	Revise/Develop Field Guide																																					80	
6	Field Test Field Guide																																					80	
7	Finalize Field Guide																																					60	
8	Final Report																																					60	
	Planned Overall Complete	7	13	20	34	34	41	41	41	41	41	41	41	41	41	41	41	41	41	41	41	41	41	41	41	41	41	41	41	41	41	41	41	41	41	41	60		
	Actual Overall Complete	1	3	5	7	10	15	16	18	21	28	32	40	40	40	41	41	42	42	42	43	46	47	48	49	52	54	58	60	62	64	71	80	87	95	100	87		

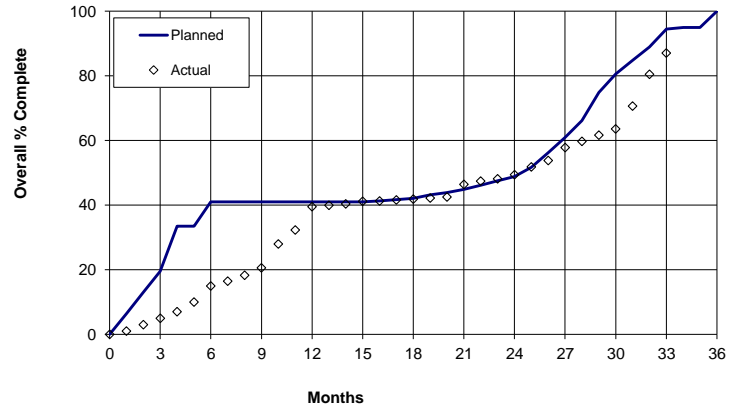
Fig. A -- Overall Project Schedule

Fig. B -- Contract Funds



Funds Expended: 85.58%
Contract Amount: \$300,000
Expended this quarter: \$76,740
Total expended to date: \$256,740
Balance: \$43,260

Fig. C -- Contract Period



Time Expended: 91.67%
Start Date: 1/2/2012
End Date: 12/31/2014